



# CHARMING

Fall 2015 | Spring 2016



# MAKE A bright statement

**J910 | DRAPES OF LUXURY NECKLACE**  
*Collar* • Designed to inspire. Multi-layered necklace has dazzling gold leaves and minuscule wine-colored beads on a 19" multiple leather strand with lobster clasp and 3-1/2" extender.  
 ~ \$39.50



J910



J906

**J906 | MODERN FRENCH DECO EARRINGS**  
*Pendientes* • Show off your artistic fashion sense. Antiqued gold French design earrings are 1-1/2" drop with fish hook backs.  
 ~ \$15.00



H774

**H774 | DANCING ZEBRAS**  
*Bufanda* • It's time to wrap. Bright red and orange color splashes and eyelash fringe trim. This ultra wide zebra patterned scarf can be worn as a shawl or scarf. 39" W x 70" L. 100% Premium viscose.  
 ~ \$24.50

**J902 | THREE RING HAMMERED-GOLD NECKLACE**  
*Collar* • Hammered antiqued gold rings embellished with minuscule black crystals are on a 16" gold rope chain with lobster clasp & 3" extender.  
 ~ \$19.50



J902



J901

**J901 | THREE RING HAMMERED-GOLD EARRINGS**  
*Pendientes* • Hammered antiqued gold earrings embellished with minuscule black crystals. Earring are 1-1/2" drop with fish hook backs.  
 ~ \$19.50

**J913 | LUXURIOUS GOLD STRETCH BRACELET**  
*Brazalete* • Fit for a queen. Antiqued gold beaded and patterned with sparkling crystals. 2" diameter, 1-1/4" height. One size fits most.  
 ~ \$29.50

J913



J932



**J932 | ROYAL RED EARRINGS**  
*Pendientes* • Glossy pendant earrings are a 2" drop with fish hook backs.  
 ~ \$12.50

**J931 | ROYAL RED NECKLACE**  
*Collar* • Glossy crimson pendants are on an 18" gold chain with lobster clasp and 3" extender.  
 ~ \$29.00

J931

H750



**H750 | SOLID INFINITY SCARF**  
*Bufanda* • Bright, luxurious continuous loop scarf, easy to style. Material: 100% Premium viscose, Size: 25" x 33".  
 ~ \$19.50



**H780 | EGYPTIAN PATTERN MATCH SCARF**

*Bufanda* • Ultra wide scarf features a hieroglyphic repeat print with solid gray trim edges. Can be worn as a scarf or shawl. 100% Premium viscose. 42" W x 72" L. ~ \$24.50



H780

# TURQUOISE influences

**J94 | ALL LINKED TOGETHER NECKLACE**

*Collar* • Really can't be missed. Multi-tiered chains in antique gold, copper and natural patina are highlighted by hand crafted linked circles and hoops featuring rich hammered textures and bold etched details. 16" L, 3" extender, lobster clasp closure. ~ \$19.50



J94

**H782 | SWEET-PEA PRETTY SCARF**

*Bufanda* • Ultra-soft solid color scarf features delicate eyelash trim. Can be worn as shawl or scarf. 100% Premium viscose. 27" W x 68" L. ~ \$24.50



H782

**J110 | MIXED METALS MULTI-STRAND NECKLACE**

*Collar* • Beautiful harmonies. Simple delicate chains are gathered together in copper, silver, black and gold to form this amazing draped necklace. Chains drape 24" to 27½" L with 2" extender with lobster clasp. ~ \$25.00



J110

**J694 | SILVER BEADED WRAP BRACELET**

*Brazaletes* • Stunning bracelet with silver beading that wraps the wrist 5-6 times, button and loop closure. 32" L. ~ \$15.00



J694

H772

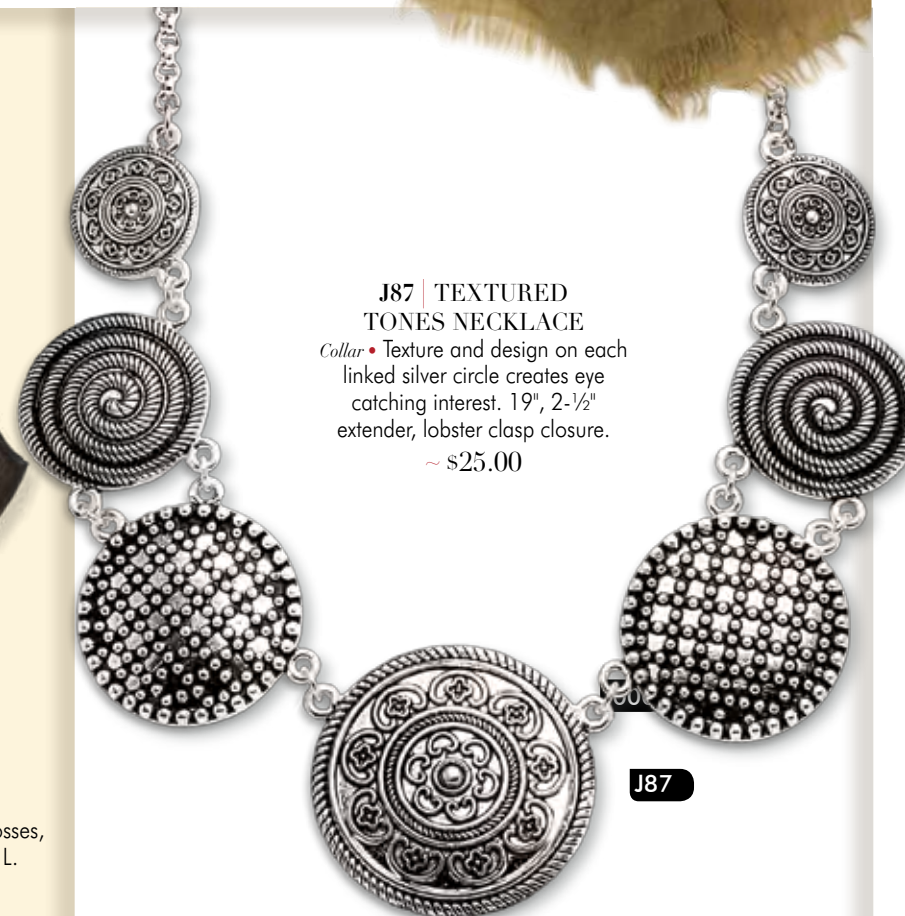


**H772 | CROSS PRINT SCARF**

*Bufanda* • Midnight black scarf in an airy fabric, dotted with gold metallic crosses, a classic piece for every wardrobe. 100% Premium viscose. 28" W x 66" L. ~ \$19.50

**J87 | TEXTURED TONES NECKLACE**

*Collar* • Texture and design on each linked silver circle creates eye catching interest. 19", 2-½" extender, lobster clasp closure. ~ \$25.00



J87

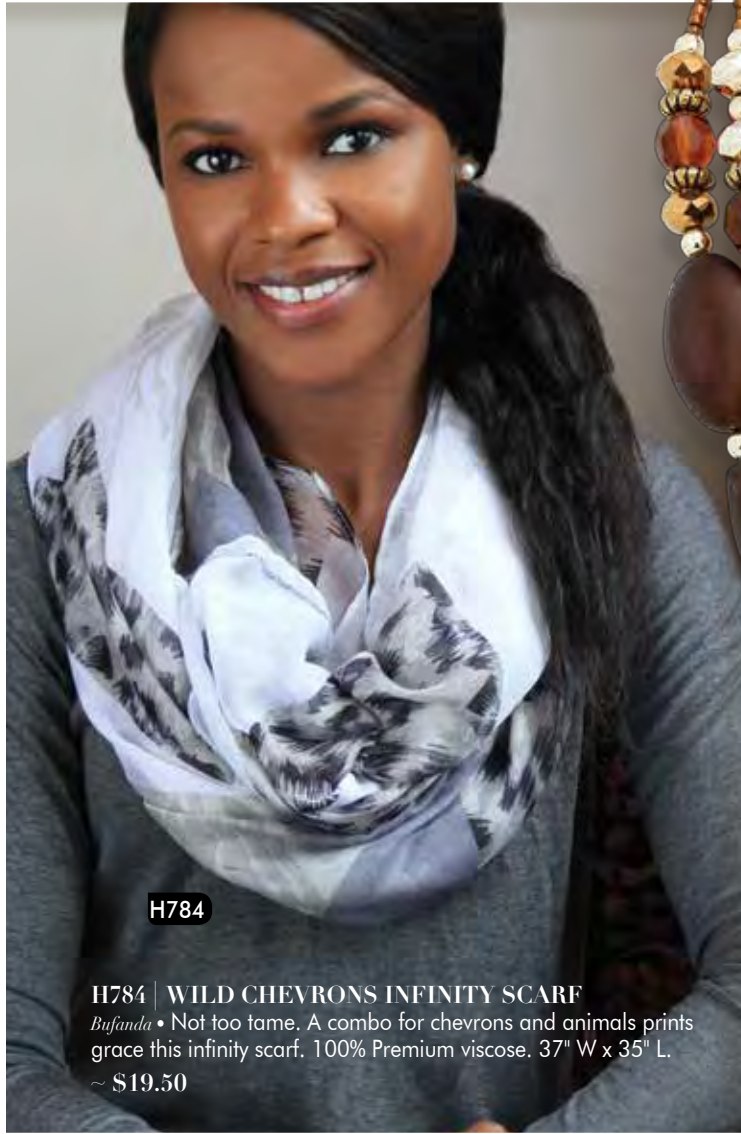
H761



**H761 | ZEBRA INFINITY SCARF**

*Bufanda* • Two-toned infinity loop scarf in zebra stripes and a bright solid, easy to style. 100% Premium viscose. 30" W x 34" L. ~ \$19.50





H784

**H784 | WILD CHEVRONS INFINITY SCARF**  
*Bufanda* • Not too tame. A combo for chevrons and animals prints grace this infinity scarf. 100% Premium viscose. 37" W x 35" L.  
 ~ \$19.50



H763

**H763 | SAILOR STRIPES SCARF**  
*Bufanda* • Painted print striped scarf, super-soft with eyelash fringe on ends. 100% Premium viscose, 31"W x 72"L.  
 ~ \$19.50

# BOLD color accents



J939

**J939 | AUTUMN'S KISS BEADED TRIO NECKLACE**  
*Collar* • Three draped strands of multi-faceted beads and polished stones in hues of green, goldens and earthy browns. 17" L with 3" extender and lobster clasp.  
 ~ \$39.50



J942

**J942 | GOLDEN CIRCLE PENDENT NECKLACE**  
*Collar* • Sparkling circle pendent is 1-3/7" diameter and hangs from a three 18-1/2" delicate gold tone chains with a lobster clasp & 3" extender.  
 ~ \$29.50



H751

**H751 | ROCK STAR SHIMMER SCARF**  
*Bufanda* • Touchable, traditional scarf in shimmering black, easy to style. 100% Premium viscose. 40" W x 76" L.  
 ~ \$19.50

**J903 | AUTUMN ACCENTS NECKLACE**  
*Collar* • Alluring appearance. Double roped cord holds strands with multi-faceted beads, polished stones in autumn hues with a delicate cut-out leaf. 18" L with 3-1/4" extender and lobster clasp closure.  
 ~ \$24.50



J903

**H758 | JUNGLE FEVER SCARF**  
*Bufanda* • Soft scrunch textured scarf in multiple prints of zebra and leopard in blacks and grays. 100% Premium viscose. 28" W x 74" L.  
 ~ \$19.50



H758



J905

**J905 | JUNGLE PATTERNS BRACELET**  
*Brasalete* • On the wilder side. Dramatic oversized natural polished stones and etched beads in jungle patterns. Approx. 8" stretch, one size fits most.  
 ~ \$19.50



**H775 | STRIPED FLOWER POWER SCARF**

*Bufanda* • Always in fashion. Two sided scarf features soft open weave texture with self fringe. 100% Premium viscose. 15" W x 75" L. ~ \$29.50



H775



J950

**J950 | RIVER-WALK TRIPLETS BRACELET**  
*Brazalete* • Wear one, wear two, or wear all three. Three separate turquoise & earth-tone beaded stretch bracelets, each is 2-1/4" diameter. One size fits most. ~ \$19.50

# MAKE A pretty match



J909

**J909 | FIESTA MIX EARRINGS**  
*Pendientes* • Vibrant colored stone with mini turquoise bead accent. Earrings are 1-1/4" drop with fish hook backs. ~ \$15.00

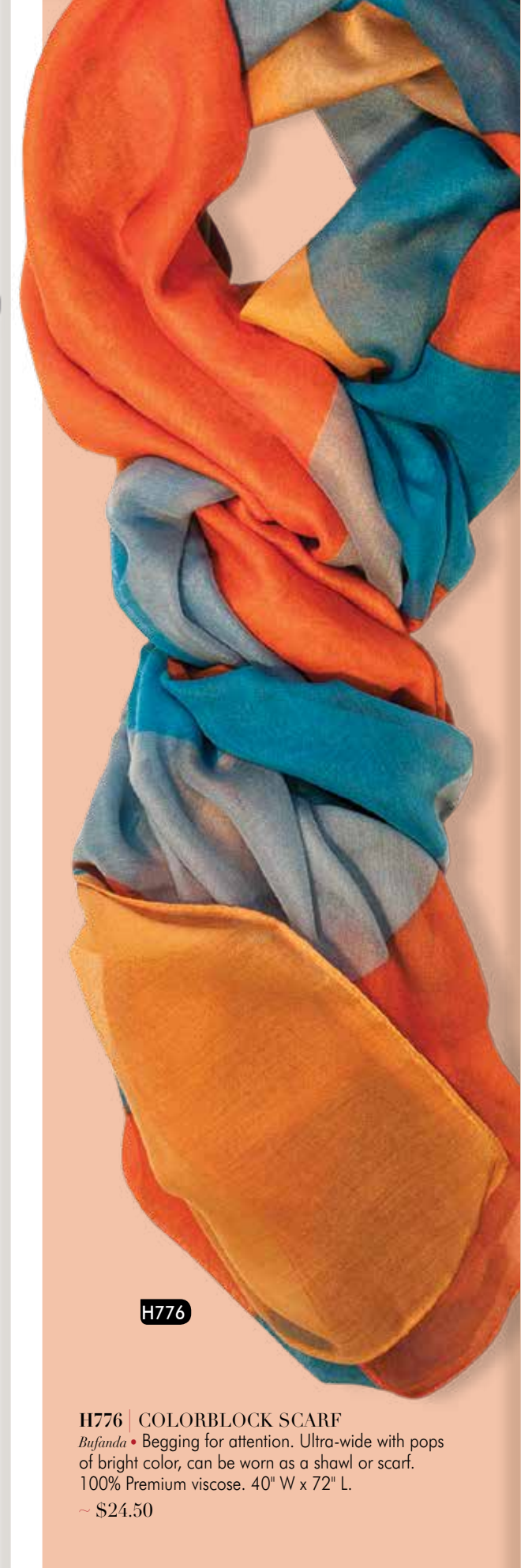
J908

**J908 | FIESTA MIX NECKLACE**  
*Collar* • Translucent beads and painted stones mix it up with drapes of multi-colored mini-beads. Lobster clasp and 3-1/4" extender. ~ \$39.50

**J725 | FASHION TREND MULTI-COLOR CUFF BRACELET**  
*Brazalete* • Stunning cuff bracelet set with multi-color balls in strands of silver. Bracelet adjusts, Measures 2-3/4" at its widest point. One size fits most. ~ \$15.00



J725



H776

**H776 | COLORBLOCK SCARF**  
*Bufanda* • Begging for attention. Ultra-wide with pops of bright color, can be worn as a shawl or scarf. 100% Premium viscose. 40" W x 72" L. ~ \$24.50



# PRETTY PERFECT ADORNMENTS



**J924 | PRECIOUS HEART CHARM NECKLACE**  
*Collar* • Show your heart. Silver open heart pendant is laced in dazzling crystals on a 18" delicate silver chain with lobster clasp and 2-1/4" extender.  
 ~ \$19.50

**J951 | DOLPHIN CHARM NECKLACE**  
*Collar* • Making waves. Dolphin pendant charm glitters with white crystals and single black crystal accent. 15-1/2" silver chain with lobster clasp and 2-1/2" extender.  
 ~ \$19.50

**J921 | CRYSTAL KEY CHARM NECKLACE**  
*Collar* • Key to treasure. Treasure-chest key glitters with white crystals. 18" silver chain with lobster clasp and 2" extender.  
 ~ \$19.50

**J922 | WISE EYES OWL NECKLACE**  
*Collar* • Get some attention. Owl featuring black crystal eyes and white crystal encrusted body. 18" L silver chain with lobster clasp and 2" extender.  
 ~ \$19.50

**J573 | TREBLE CLEF NECKLACE**  
*Collar* • Show off your musical side. Fashionable silver sparkling necklace. 17" L silver chain with lobster clasp and 2" extender.  
 ~ \$19.50

**J928 | LEAVES OF GOLD HEADBAND**  
*Cinta para la cabeza* • You wear it well. Sculpted golden leaves link together to form this headband. Back stretch elastic, one size fits most.  
 ~ \$19.50



J928



J930

**J914 | DELICATE BEADED HEADBAND**  
*Cinta para la cabeza* • Lovely scalloped headband with ivory and gold beading. Back stretch elastic, one size fits most.  
 ~ \$19.50

**J930 | SILVER TASSEL NECKLACE**  
*Collar* • Watch out. Three beaded balls accent the tasseled ends for an attention getting sparkle. Necklace Approx. 7" L.  
 ~ \$24.50



J412

**H771 | LEOPARD'S SPOTS SCARF**  
*Bufanda* • Jungle excursion. Leopard print is edged with soft teal and delicate eyelash fringe. Can be worn as a shawl or scarf. 100% Premium viscose. 35-1/2" W x 72" L.  
 ~ \$19.50

**J412 | TEXTURED CUFF BRACELET**  
*Brazalete* • Wrap around style. Antique silver is a bold and distinctive look. Approx. 8", one size fits most.  
 ~ \$25.00



J914



H771





H783

# BEAUTIFUL natural tones

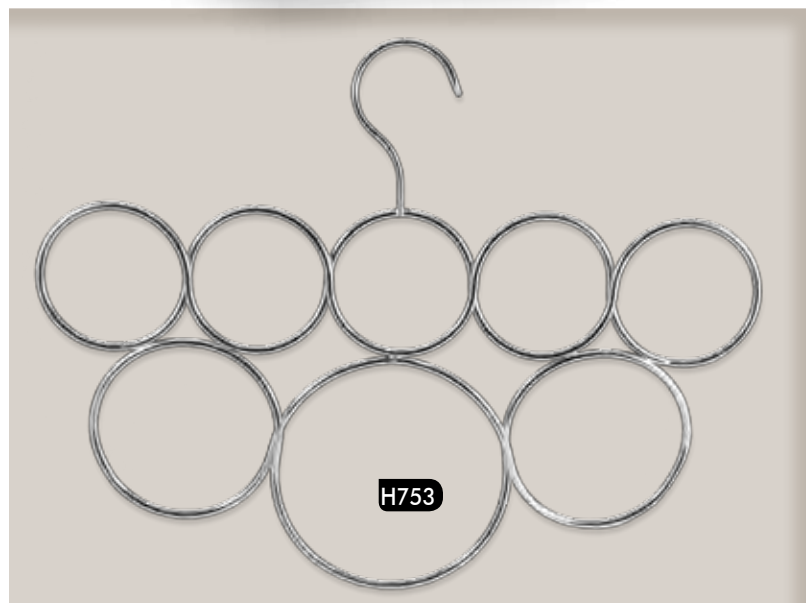


J107

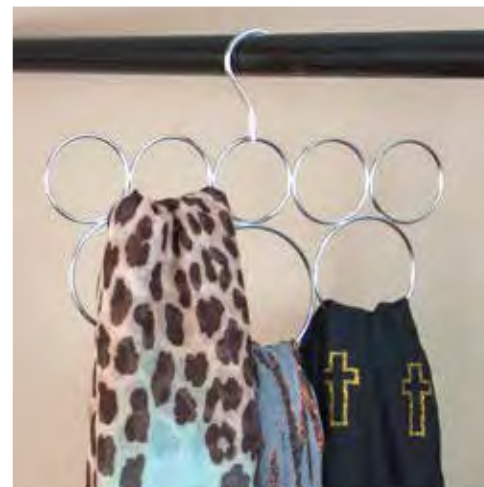
**H783 | GEO-GRAPHIC SCARF**  
*Bufanda* • Safari prints and graphic patterns combine in a soft weave fabric to create this ultra wide scarf. Can be worn as a shawl or scarf. 100% Premium viscose. 38" W x 70" L.  
~ \$19.50

**J107 | CHANDELIER BRACELET**  
*Brazalete* • Black mesh bracelet give depth to clusters of clear, light pink and silver faceted beads. 8" L.  
~ \$15.00

**H753 | IN CIRCLES SCARF HANGER**  
*Percha para bufanda* • Organize and holds multiple scarves. Size: 10 W" x 13" H.  
~ \$19.50



H753



J496

**J496 | SOPHISTICATED  
FILIGREE HEART NECKLACE  
AND EARRING SET**  
*Collar Y Pendientes* • Rich designer heart slide on a herringbone chain, 18" L, lever-back closure and 2" extender. Open heart-shaped earrings, 1" drop on lever-back closures.  
~ \$24.50



H769

**H769 | SHOW STOPPER INFINITY SCARF**  
*Bufanda* • Glamming it up. Continuous infinity loop scarf is party ready with glittery sequin mesh overlay. 100% Premium viscose. 19" W x 36" L.  
~ \$19.50

**J904 | PRAYER REMINDER BRACELET**  
*Brazalete* • Silver bracelet with block letter display, silver and clear faceted beads with a silver cross dangle. Approx. 4-1/2" stretch, one size fits most.  
~ \$19.50



J904





J230

**J230 | SPARKLE PASTEL NECKLACE & EARRINGS**  
*Collar y pendientes* • Perfect pastel sparkle beads. Necklace is accented by a single silver cross. Adjusts up to 15". Includes matching earrings.  
~ \$15.00



J315

**J315 | ANGEL BRACELET**  
*Brazalete* • Adorable double beaded children's bracelet with pink ribbon bow. Stretch design, one size fits most.  
~ \$15.00



J944

**J944 | JEWELRY TREE DISPLAY**  
*Árbol de joyería* • On Display. White acrylic stand gives a place for necklaces, bracelets and earrings to be on display and easy to locate. 6" W x 11-3/4" H.  
~ \$15.00

# LITTLE FASHIONISTA Favorites



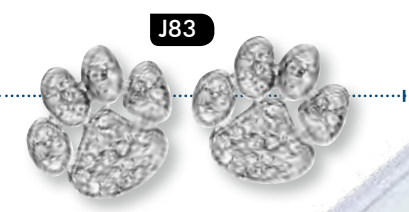
J619

**J619 | ZIPPER NECKLACE**  
*Collar* • Fun and whimsical. Necklace features multi-colored zipper pulls. 16" with lobster clasp.  
~ \$15.00



J574

**J574 | PAW PRINT NECKLACE**  
*Collar* • A hit with lovers of every breed. Crystal studded necklace. 15" L with 2" extender and lobster clasp closure.  
~ \$19.50



J83

**J83 | PAW PRINT EARRINGS**  
*Pendientes* • Calling all dog lovers. Post earrings inset with crystals. 1/2" diameter.  
~ \$12.50



J953

**J953 | JEWELRY ORGANIZER**  
*Caja de la joyería* • Easy to see. Clear acrylic jewelry tray with 12 dividers, flips open to reveal a 4-1/4" diameter mirror. Closed: 5-3/4" W x 5-3/4" L x 1-3/4" H.  
~ \$19.50



**J89 | CROSS DESIGN PONYTAIL HOLDER**  
*Lazo del pelo* • Wear it in your hair or on your wrist. Silver cross elastic ponytail holder fits women or girls.  
~ \$15.00



J89







H740

**H740 | CROSS PRINT WRAP SCARF**  
*Bufanda* • Delicate lightweight fabric in white with leopard print crosses. 100% premium viscose. 36" W x 72" L.  
~ \$19.50



H742

**H742 | LAZY LEOPARD SCARF**  
*Bufanda* • Continuous infinity scarf in leopard spots with multi-colored stripes. 100% Premium viscose. 32" W x 34" L.  
~ \$19.50

# TIMELESS fashion finds

**H770 | TREETOP BLUES SCARF**  
*Bufanda* • Painted trees print. A medley of blues and blacks on soft, touchable fabric are features of this infinity scarf. Easy to style. 100% Premium viscose. 27" W x 36" L.  
~ \$19.50



H770

**J947 | HAMMERED SILVER CROSS BRACELET**  
*Brazalete* • Faith displayed. Hammered silver cross is linked with circular clasp, 7" with 3/4" extender. One size fits most.  
~ \$19.50



J947

**J998 | PINK RIBBON EARRINGS**  
*Pendientes* • Show you support finding the cure. Pink ribbon French wire earrings.  
~ \$15.00



J998



J915

**J915 | FOR THE CURE SENTIMENTS BRACELET**  
*Brazalete* • Fight for the cure. Silver-toned bangle bracelet is studded with turquoise beads and features four dangle charms. Approx. 9", one size fits most.  
~ \$19.50



H756

**H756 | STARLIGHTS SCARF**  
*Bufanda* • Lightweight sheer scarf with diminutive iridescent studded trim on ends. 100% premium viscose. 30" W x 68" L.  
~ \$19.50

# SPARKLE day into night

**J840 | STUDED DROP EARRINGS**  
*Pendientes* • Single line of beautiful. Austrian crystal rhinestones form a 2" drop.  
~ \$15.00



J840

**J542 | CRYSTAL STRETCH BRACELET**  
*Brazalete* • An exquisite choice for wedding parties, proms or any outfit that requires a serious sparkle of a double row of crystals. Stretch style, one size fits most.  
~ \$19.50



J542





H779

**H779 | TREND-SETTER STRIPES SCARF**  
*Bufanda* • Painters practice. Multi-colored painted stripes of navy, teal and golden mustard cover the ultra wide scarf. Can be worn as a shawl or wrapped as a scarf. 100% premium viscose. 37" W x 72" L.  
 ~ \$24.50

**J933 | SILVER CUFF BRACELET**  
*Brazalete* • Off the cuff. Beautiful hammered silver finish with hinge-type opening. One size fits most.  
 ~ \$24.50



J933

## SHINE ON polished and pretty

**J13 | FILIGREE & CRYSTAL EARRINGS**  
*Pendientes* • Glistening crystals. Multi-faceted black stones are accented by open cut filigree shapes edged with crystals. Wire hooks with 1" drop.  
 ~ \$15.00



J13



J929

J927

**J941 | SILVER CIRCLE PENDENT NECKLACE**  
*Collar* • Unending style. Sparkling circle pendent is 1-3/7" diameter and hangs from three 18-1/2" delicate silver-tone chains. 3" Extender with lobster clasp.  
 ~ \$29.50

**J929 | SWIRLY HEART NECKLACE**  
*Collar* • Antiqued silver heart 1-3/4" pendent cutout with a swirl design hangs on a 16" silver rope with lobster clasp and 2-1/2" extender.  
 ~ \$19.50

**J927 | CHARMING TREASURES NECKLACE**  
*Collar* • A vintage key & lock and a variety of heart charms collect together on a circle pendent held by a 17-1/2" silver chain with lobster clasp and 3" extender.  
 ~ \$24.50

**H768 | PASTEL JAGUAR PRINT SCARF**  
*Bufanda* • Leopard print on teal camouflage is edged with soft eyelash fringe. 100% Premium viscose. 26" W x 73" L.  
 ~ \$19.50

**J560 | SCRIPTURE WRAP BRACELET**  
*Brazalete* • Gentle reminder. Silver wrap bracelet with crystal accents display the scripture 1 Corinthians 13:4-8. Approx. 4-1/2" stretch, one size fits most.  
 ~ \$24.50



J560



H768



J938

**J938 | BLACK AND WHITE PATTERNED TRAVEL JEWELRY CASE**  
*Titular de la joyeria* • Keep your jewelry safe and secure when you travel. Perfect size to tuck into a gym bag too! Folds to 5-1/4" H. Metal hanger, four zippered pockets and snap closure. 9-1/2" W x 14" L.  
 ~ \$19.50



1 Corinthians 13:4-8  
 Love is patient, love is kind. It does not envy, it does not boast, it is not proud. It is not rude, it is not self-seeking, it is not easily angered, it keeps no record of wrongs. Love does not delight in evil but rejoices with the truth. It always protects, always trusts, always hopes, always perseveres. Love never fails. But where there are prophecies, they will cease; where there are tongues, they will be stilled; where there is knowledge, it will pass away.



# FOR THE gentleman



**J937 | STAR OF DAVID NECKLACE**  
*Collar* • Show of faith. Beautiful 3-D necklace of brushed silver with polished silver star inset. Pendant is 1-1/2" L, necklace is 20-1/2" L.  
 ~ \$19.50

**J633 | LEATHER BRACELET**  
*Brazalete de cuero* • Faith's presence. Great for casual, everyday wear. 8-3/4" L. with button closure, one size fits most.  
 ~ \$17.00

## Seal of Quality

Our seal of quality is our pledge to you of outstanding craftsmanship to ensure the very best in costume jewelry.

- ~ Nickel Free
- ~ Lead Free
- ~ Hypo-Allergenic
- ~ Latest in Fashion & Design



**J952 | CLASSIC KEYCHAIN FOB**  
*Holder llavero* • Easy to find in pockets. Heavy-duty boat snap attaches easily to belt loops. Spring-loaded gate opens with light pressure. Gift boxed, 4-3/4" L.  
 ~ \$19.50



**J633**

## TRI-FOLD DESIGN

**J755 | TRI-FOLD LEATHER WALLET**  
*Holder llavero* • Soft tri-fold leather wallet features a snap closure and bill compartment with zippered divider. Slot for 9 cards, slide out photo holder and inside ID window.  
 ~ \$19.50

